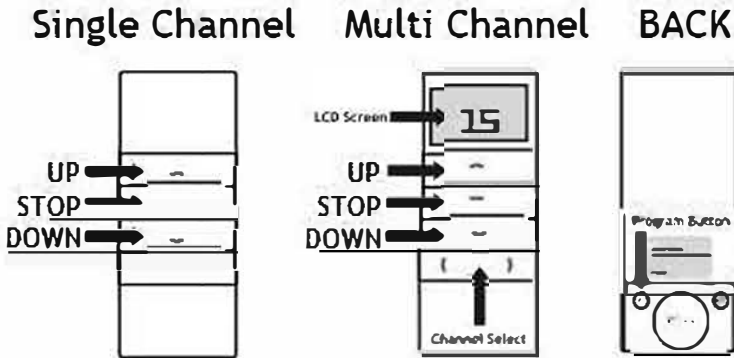




Remote Programming Instructions

Remote Operation



1

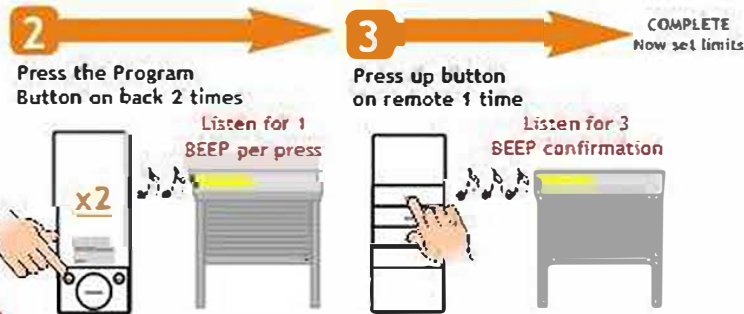


Power on shutter
Listen for long BEEP



* Complete programming within 4 seconds of beep

When Motor is on Outside Left



* If programming is incorrect for up/down, just repeat steps 2-3 for correct side

When Motor is on Outside Right



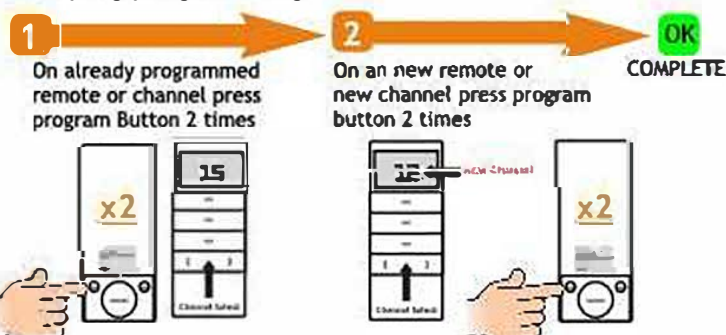
* If programming is incorrect for up/down, just repeat steps 2-3 for correct side

Limit Setting Instructions



Additional Programming Instructions

Jumping programming



Factory Reset programming

